



**KRAISSL MODEL 73**  
**SEA-VIEW STRAINERS & FILTERS**  
**COOLING WATER SERVICE**  
**LOW PRESSURE SUCTION SERVICE TO 40 PSIG**



**EASY CLEANING**  
**SIMPLEX & DUPLEX**

**BASKET ELEMENTS**  
**REMOVABLE FROM TOP**

**SINGLE ELEMENT**  
**BASKETS**

Strainer baskets are available in all standard perforations and meshes. Filter baskets are made of wire mesh cloth, spotwelded over a supporting cylinder of perforated metal. They are available in a wide range of mesh sizes. See drawing A2354 for dimensions.

**TRANSPARENT SUMP**  
**ACCESSIBLE BY REMOVING TWO**  
**WING NUTS**

**FEATURES:**

All models

- Hand clamp requires no special tools
- Accessible swing yoke closure for easy basket cleaning
- Mounting bracket provided

**DUPLEX MODELS**

- Valve handle shields side in use
- Continuous flow without interruption during changeover
- Tapered valve plug for durability
- Interchangeable strainer, filter and double element baskets

**OTHER PRODUCTS**

Our product lines of cast iron, bronze, aluminum, steel and stainless steel simplex and duplex strainers and filters including flanged, NPT and weld-end models are covered in separate bulletins. Units can also be furnished in other special metals and higher pressure ratings.

**A1735A(9604)**



**PURPOSE**

Kraissl pipeline strainers and filters protect pumps, engines, nozzles, valves, heat exchangers and other expensive pipeline equipment from harmful flow contaminated by catching dirt and debris. These non-ferrous models are commonly specified for cooling water.

**APPLICATION**

Kraissl duplex strainers and filters provide a simple, cost effective way to separate particle impurities from fluid systems. Duplex strainers are ideal for applications where continuous flow must be maintained with no flow interruption for basket cleaning. Kraissl Model Series Sea-View are designed to protect cooling systems on marine engines and cooling water installations requiring pipeline strainers, direct sea water cooling, and indirect heat exchanger cooling. In both cases, cooling water strainers are very important. With direct cooling, marine debris can damage the cooling water pump causing the engine to fail, resulting in major repairs. Marine debris can also clog heat exchangers, requiring downtime until cleaned. Installation of cooling water strainers reduces these hazards, increasing the reliability of marine engines. Fine mesh filter baskets can also be provided for use with water supplies, and other process flow-line installations.

**DESIGN**

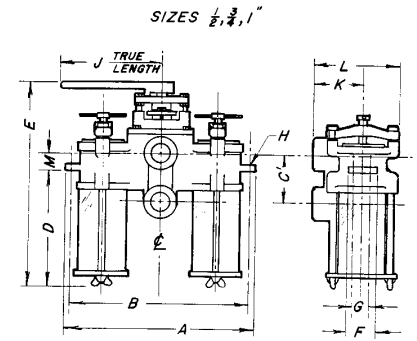
Kraissl Model 73 Sea-View Strainers offer the following advantages:

Transparent plastic sumps permit visibility of cooling water flow and collected material. Interior or exterior flow permit collection of particles in either the removable basket or in the transparent sump. Baskets are easily accessible without the use of tools. The basket is removed via the hand clamp closure and the removable sump by two wing nuts. Mounting brackets are provided on both simplex and duplex models. These units are very light weight while providing large straining area. Both simplex and duplex units are available in a range of sizes from 1/2 to 4-inch. When installed above the cooling water pump, the strainer becomes a quick means of pump priming. Interchangeable basket elements are available for a wide range of particle separations. Standard Kraissl Model 73 series strainers are manufactured of cast bronze, aluminum or stainless steel with transparent plastic basket sumps. Special valve plugs can also be furnished in stainless steel or other materials. Standard strainer baskets are of perforated metal or stainless steel. Duplex strainers are supplied with our special adjustable locking flange which permits adjustment of the tapered valve plug on its seat. A separate external gland is provided to allow easy access to valve stem packing without complete disassembly, even while in service, without changing the valve plug clearance.

The valve lever movement permanent stops and guard on the valve handle shields the side in use. The standard valve handle swings over the inlet port. Special reverse valve handles that swing over the outlet port can also be furnished. Internal channels are 100% full flow having the same cross-sectional area as the equivalent size pipe. Also refer to our drawings B3523A and A1732E for sizes and dimensions. Kraissl products are individually tested to our stringent quality control specifications. These cast pipeline strainers are manufactured according to international standard A.S.T.M. F-1199 for use in industrial and marine applications.

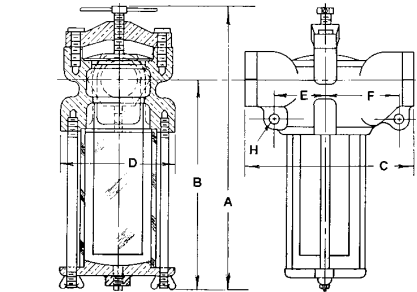
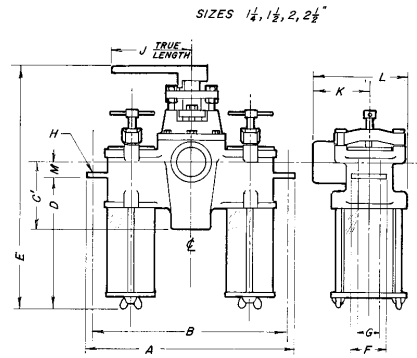
**MODEL 73 SERIES  
 DUPLEX SEA VIEW STRAINERS  
 THREADED-NPT PORTS  
 OUTLINE DIMENSIONS**

MODEL	SIZE	A	B	C	D	E	F	G	H	J	K	L	WGT.LB.
73-30	1/2"	10 1/8	9 1/2	2 1/8	6 5/16	10 3/16	1 1/2	7/8	5/16	8	2 1/4	4 1/8	18
73-32	3/4"	10 1/8	9 1/2	2 5/8	6 1/4	10 7/8	1 1/2	7/8	5/16	8	2 5/8	4 1/2	18
73-34	1"	10 1/8	9 1/2	2 5/8	6 1/4	10 7/8	1 1/2	7/8	5/16	8	2 5/8	4 1/2	18
73-36	1 1/4"	14	13 1/8	4 1/2	6 13/16	12 3/8	2 3/8	1 1/2	7/16	8	3 3/4	6 1/4	43
73-38	1 1/2"	14	13 1/8	4 1/2	8 11/16	14 1/4	2 3/8	1 1/2	7/16	8	3 3/4	6 1/4	44
73-40	2"	14 1/4	13 1/4	5 7/16	12 1/4	17 11/16	3	1 7/8	9/16	8	4	6 1/2	92
73-42	2 1/2"	18	17	7 3/4	17 15/16	26 3/8	3	1 7/8	9/16	8	5 1/16	8 5/16	93



**MODEL 73 SERIES  
 SIMPLEX SEA VIEW STRAINERS  
 OUTLINE DIMENSIONS**

THREADED-NPT PORTS										
MODEL	SIZE	A	B	C	D	E	F	G	H	WGT.LB.
73-4	1/2"	7 3/8	4 7/8	4	3 3/4	1 1/2	2	7/8	9/64	4 1/2
73-6	3/4"	9 3/8	6 7/8	5 1/2	3 3/4	1 3/4	2 3/8	1 1/4	11/32	5 1/2
73-8	1"	9 3/8	6 7/8	5 1/2	3 3/4	1 3/4	2 3/8	1 1/4	11/32	5 1/2
73-10	1 1/4"	11 3/4	7 13/16	7	5	2	3	1 7/8	7/16	11 1/2
73-12	1 1/2"	13 5/8	9 11/16	7	5	2	3	1 7/8	7/16	12
73-14	2"	15 1/8	10 7/16	9 3/4	5 7/8	2 5/8	4 1/4	2 1/4	9/16	27 1/2
73-16	2 1/2"	18 5/8	13 15/16	9 3/4	5 7/8	2 5/8	4 1/4	2 1/4	9/16	26
73-18	3"	17 13/16	12 1/4	9 3/4	8 3/8	3	4 7/8	2 9/16	9/16	46
CLASS 150 FLANGED PORTS										
73-16F	2 1/2"	18 5/8	13 15/16	9	5 7/8	2 5/8	4 1/4	2 1/4	0.563	38
73-18F	3"	17 13/16	12 1/4	10 3/8	8 3/8	3	4 7/8	2 9/16	0.563	55
73-22F	4"	20 9/16	14 1/2	14 3/8	9 5/8	4 1/8	7 1/8	3 3/8	0.563	98



Dimensions are in inches and subject to casting and production variations.

**DOUBLE ELEMENT  
 BASKETS**

These units can be supplied with our patented double-element baskets which are easily disassembled for cleaning and provide greater straining areas in the same housing. Special strainer elongated baskets and sumps are also available.

**THE KRAISSL COMPANY, INC.**  
 299 WILLIAMS AVENUE  
 HACKENSACK, NJ 07601-5225  
 Phone: (201) 342-0008, Fax: (201) 342-0025

**SINGLE ELEMENT BASKET DATA**

Use Double Element Baskets for greater straining area.

INCH PIPE SIZE	INTERNAL PIPE AREA SQ. IN.	BASKET DIMENSIONS		TOTAL SCREEN AREA SQ. IN.	APPROX. OPEN SCREEN AREA SQ. IN.		RATIO OF OPEN AREA TO PIPE AREA	
		O. D.	LENGTH		1/16" HOLE DIA.*	1/32" HOLE DIA.**	1/16" HOLE DIA.*	1/32" HOLE DIA.**
1/2	0.304	1 9/16	3	16.6	6.66	4.66	34.9:1	24.4:1
3/4	0.533	1 9/16	5 1/8	27.1	10.8	7.58	20.3:1	14.2:1
1	0.864	1 9/16	5 1/8	27.1	10.8	7.58	12.5:1	8.8:1
1 1/4	1.495	1 15/16	5 1/2	36.4	14.6	10.2	9.8:1	6.8:1
1 1/2	2.036	1 15/16	7 3/8	47.8	19.1	13.4	9.4:1	6.6:1
2	3.355	1 15/16	10 5/8	67.3	27.0	18.8	8.0:1	5.6:1
2 1/2	4.788	2 5/8	11	96.1	38.5	27.0	8.0:1	5.6:1
3	7.393	3 1/2	8 1/2	103	41.2	28.8	5.6:1	3.9:1
4	12.73	4 1/8	10 1/2	149	59.6	41.7	4.7:1	3.3:1

\* Based on 40% open area.  
 \*\*Based on 28% open area.